

Display & Control Panel

Max. RPM : 17,000 rpm
Max. RCF : 34,249 xg

LED Display
Status of RPM / RCF / Time / Temperature / ACC / DEC / Program

Key Lock / Unlock

End Alarm
Sound volume(0~10, 0: Silent)

Setting Speed
Press once : Setting RPM
Press twice : Setting RCF

Setting Temperature
-20°C ~ 40°C
Fast Cool : Quickly lower the temperature of the chamber and the rotor to the desired temperature

Program Save/Call
Press once : Calling up a program
Press twice : Saving a program

Setting Time
Up to < 100 hr
Continuous run(00:00)

Setting ACC / DEC Rate
ACC (1 ~ 9 steps, Max.9)
DEC (0 ~ 9 steps, Natural DEC.0)

At Set Speed
LED On : Time is counted when reaching the set speed
LED Off : Time is counted immediately after the start
Press more than 2sec. : Setting number of end alarm

Short Spin

Start / Stop

Lid Open

Setting Run Parameters (RPM / RCF / Time / Temperature / ACC / DEC)



Saving / Calling Up a Program

Save : Press the Program button twice
Call : Press the Program button once



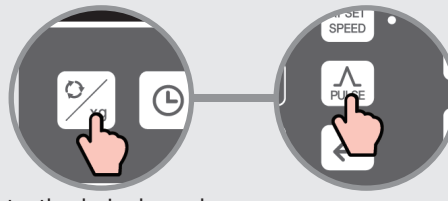
Fast Cool



Set the desired temperature (see 'Setting Run Parameters')

Press the Temp button more than 2sec.

Pulse

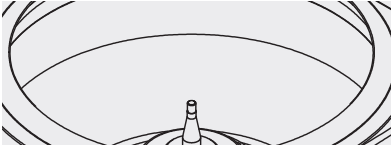


Enter the desired speed (See 'Setting Run Parameters')

Press and hold the Pulse button. (When the Pulse button is released, the rotor begins decelerating.)

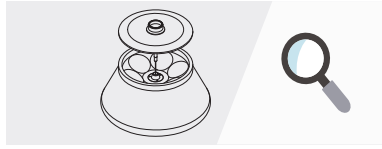
Cautions for Use

Before Operation



Check the Chamber & Accessories

Inspect the chamber, rotor & accessories for foreign objects.



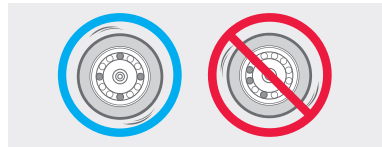
Check the Accessories for Abnormalities

Check the rotor, buckets and tubes are free of scratch and crack before operation.



Balancing the Centrifuge and Rotor

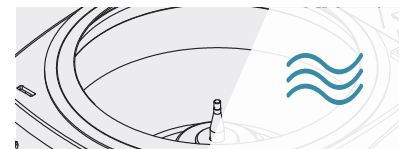
After relocating the device or loading the rotor, balance them by using a leveler. If necessary, level the device by adjusting the 'Height adjustment wheel' on the bottom of the device.



Load Tubes Symmetrically

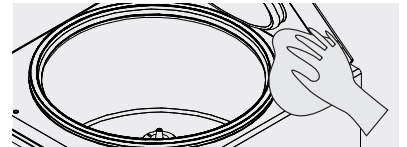
Load tubes symmetrically into the rotor with identical amount.

After Operation



Keep the Chamber Dry

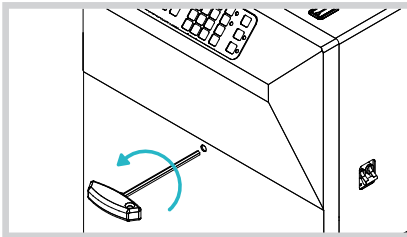
Wipe up the moisture in the chamber with a dry cloth after use. Keep the lid open when not in use.



Cleaning

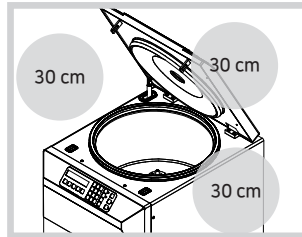
Clean the chamber and rotor by wiping with a cloth soaked in mild detergent and dry completely.

Maintenance



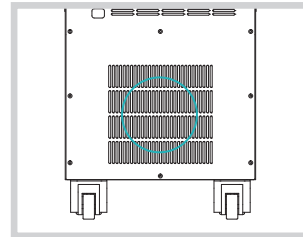
Emergency Lid Open

If the centrifuge lid cannot be opened, insert the provided T-wrench into the emergency release hole in the front of the device and turn it counterclockwise. (Before activating emergency open, switch off the device and wait for the rotor to stop.)



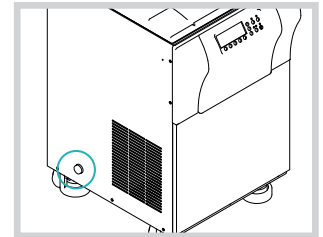
Allow a Safety Clearance of 30 cm

Allow a safety clearance of 30 cm around the centrifuge during operation.



Remove Dust

Remove any dust from the ventilation slits on the back side of the device.



Empty the Condensation Water

Empty the condensation water regularly by removing the drain cap on the left side of the device.

Electrical Safety



Check the Line Voltage

Connect the device to voltage sources, which correspond to the electrical requirements on the label attached to the device.



Grounded Outlet

Check the wall outlet is earth-grounded, surge-protected and can supply enough power.



Switch Off the Device

Switch off the device after use. Unplug the power plug before cleaning or unused for a long period of time.

Rotors

A2.0-36	36 x 1.5/2.0 mL / Max. 15k	A50c-6	6 x 50 mL conical / Max. 15k
A10-12	12 x 10 mL / Max. 17k	A50-8	8 x 50 mL / Max. 15k
A15-12	12 x 15 mL / Max. 17k	A85-6	6 x 85 mL / Max. 15k
A15c-12	12 x 15 mL conical / Max. 15k	A250-6	6 x 250 mL / Max. 10k
A50-6	6 x 50 mL / Max. 17k		