

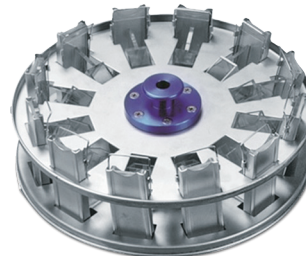
Clinical Centrifuges

CellSpin II

Clinical Centrifuge

CellSpin II

- Ideal for cytology experiment
- Accommodate up to 0.6 mL x 12 slides
- Saves up to 30 user-defined programs
- For the concentration of small number of cells on a specific region of a slide
- SOFT start / stop function for slow acceleration and braking. Optimized for cell separation by gradient centrifugation
- Lid opens automatically at the end of the run.



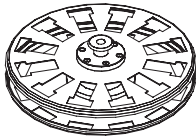
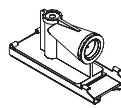
Technical Specifications

		CellSpin II*
Speed	Max. RPM / Fixed angle	3,000 rpm
RCF (xg)	Max. RCF / Fixed angle	1,175 xg
Max. capacity / Fixed angle		12 slides x 0.6 mL
ACC/DEC	ACC/DEC ramps	DEC 2 steps(Softstop)
	Acc. time to max. speed	50 / 50 sec
	Dec. time from max. speed	35 / 183 sec
Time control		< 100 min, continuous
Program memory		30
Noise level		≤ 60 dB
Imbalance cutoff		Yes
Dimension (W x D x H, mm)		318 x 436 x 260
Weight without rotor		23 kg
Power consumption		556 VA
Power supply (V/Hz)		210~240V, 50/60 Hz (110V optional)
Cat. No.		CE-II

* Registered as medical device at MFDS¹⁾

¹⁾ MFDS : Ministry of Food and Drug Safety (KOREA)

Fixed Angle Rotor for CellSpin II

Rotor		Tube Capacity	Max. RPM (rpm) Max. RCF (xg)
<p>A-cyto-12</p>  <p>Type : Angle Rotor Max. Capacity : 12 x 0.6 mL Size (ø x H) : ø233.5 x 65 mm Radius : 116.8 mm Incl. 12 ea of cytocell set</p>	 <p>Cytocell Accessory 12 slides x 0.6 mL</p>	<p>3,000 1,175</p>	

* Radius : From the center of the rotor to the inner end of tube carrier.

